



osmo®



WOOD FINISHES

COLOUR AND
PROTECTION FOR
THE EXTERIOR



WOOD THAT LASTS. It takes 100 years for a tree to grow into solid quality. In their 100 years as a company, Osmo has gathered experience in handling wood. Our attention to detail and expertise are devoted to the appropriate processing and long-term preservation of the valuable raw material wood.

COLOUR THAT PROTECTS. Only a finish that meets the needs of wood can preserve the natural beauty and durability of wood. More than 40 years ago, Osmo developed microporous wood finishes that are based on natural oils and waxes. With this the company played a pioneering role in the field.

WOOD MEETS COLOUR

THE CONNECTION. Our passion for wood and finishes at Osmo flows directly into modern product development and research. To this day we are still the only manufacturer who completes its value chain with wood finishes developed and produced in-house.

Wood and colour from one source – a combination you can rely on.

THIS IS OSMO



NATURALLY OSMO. BECAUSE
EXPERIENCE ADDS WISDOM.

LASTING BEAUTY THANKS TO NATURAL OILS AND WAXES

Wood is an organic work material. Its cells can take on and release moisture. Wood breathes. To retain this ability, we have developed wood finishes perfectly geared towards the special properties of wood. Osmo wood finishes are based on natural oils and waxes. Oil penetrates into the wood surface and protects the wood from the inside. Wax forms an elastic, microporous surface and protects the wood from the outside. The wood stays beautiful and elastic for good.

NATURAL: HEALTHY LIVING

Good for people and good for wood: sunflower, soya, linseed and thistle oils are the basis for our wood finishes. Our natural waxes are approved for the food industry; our pigments do not contain any harmful heavy metals. Dearoma-tized white spirit ensures that the finishes are easy to apply.

HIGH COVERAGE: BIG SAVINGS

Osmo wood finishes have an unusually high content of colour pigments and oils. Therefore they offer better coverage and deliver the desired results with as few as one or two coats, and no primer is needed. The bottom line: one can of Osmo wood finish coats much more square metres than a conventional finish. This saves time and money.

FAST: NO SANDING NEEDED

Forget the time-consuming sanding work. Osmo wood finishes can be easily renovated at any time. To do this, you do not even have to recoat the whole area.

Osmo wood finishes – You will notice the difference

SCREENS



COUNTRY
COLOUR
(Page 10)



NATURAL OIL
WOODSTAIN
(Page 12)



NATURAL OIL
WOODSTAIN
EFFECT (Page 14)



ONE COAT
ONLY HS^{PLUS}
(Page 16)



DECKING-
OILS
(Page 8)



UV-PROTECTION-OIL/
UV-PROTECTION-
OIL **EXTRA** (Page 18)

DECKING



DECKING-
OILS
(Page 8)



END GRAIN
SEALING WAX
(Page 8)



ANTI-SLIP
DECKING OIL
(Page 9)



NATURAL OIL
WOODSTAIN
(Page 12)

TIMBER CLADDING / SUMMER HOUSES



COUNTRY
COLOUR
(Page 10)



NATURAL OIL
WOODSTAIN
(Page 12)



NATURAL OIL
WOODSTAIN
EFFECT (Page 14)



ONE COAT
ONLY HS^{PLUS}
(Page 16)



OPAQUE GLOSS
WOOD STAIN
(Page 10)



UV-PROTECTION-OIL/
UV-PROTECTION-
OIL **EXTRA** (Page 18)



WR BASE COAT
(Page 20)



UV-PROTECTION-
OIL **TINTS**
(Page 20)

GARDEN FURNITURE



COUNTRY COLOUR
(Page 10)



ONE COAT ONLY HS^{PLUS}
(Page 16)



DECKING-OILS
(Page 8)



TEAK-OIL SPRAY
(Page 25)



GARDEN FURNITURE MAINTENANCE KIT
(Page 21)

CARE AND TOOLS



DECKING CLEANER
(Page 22)



GARD CLEAN
(Page 22)



WOOD REVIVER POWER-GEL
(Page 22)



PAINT REMOVER GEL
(Page 22)



POLYMER COMPOSITE CLEANER
(Page 23)



RESIN REMOVER SET
(Page 25)



BRUSH CLEANER AND THINNER
(Page 25)



FLAT BRUSH
(Page 25)



ROLLER AND BRUSH SET
(Page 25)



DECKING BRUSH SET
(Page 25)



DECKING BRUSH WITH HANDLE
(Page 25)



SYSTEM TELESCOPIC HANDLE
(Page 25)



DECKING CLEANING BRUSH WITH HANDLE
(Page 25)



DECKING & FLOORING CLEANING MACHINE
(Page 25)



END GRAIN SEALING WAX

> Especially developed for sealing end grains – reduces the risk of cracks!

DECKING-OILS

Especially developed for the individual needs of numerous soft and fine woods!

- > Clear or transparent, satin, for exterior use
- > Highly recommended for timber decking and garden furniture
- > Decking-Oils smoothen the wood surface and make it water and dirt-repellent.
- > Number of coats: two coats on raw wood. For renovation, normally one coat applied to a clean and dry surface is sufficient – without sanding!
- > Can sizes: 0.75 L; 2.50 L; 25 L
- > 1 litre covers approx. 24 m² with one coat.

Note: Osmo Teak-Oil is clear and does not protect against the UV radiation of the sun (greying).

ANTI-SLIP DECKING OIL

Oil-based, slip-resistant finish – added safety for your family!

- > Number of coats: one top coat on decking pre-treated with one of the pigmented Osmo Decking-Oils. For renovation, normally one coat applied to a clean and dry surface is sufficient – without sanding!



Apply with:



004 Douglas Fir Oil,
Natural shade



006 Bangkirai Oil,
Natural shade



016 Bangkirai Oil,
dark



007 Teak Oil, Clear*



009 Larch Oil,
Natural shade



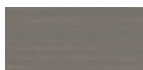
010 Thermowood
Oil, Natural shade



013 Garapa Oil,
Natural shade



014 Massaranduba
Oil, Natural shade



019 Decking-Oil
Grey



021 Decking-Oil
Bog Oak



5735 End Grain
Sealing Wax, Clear



430 Anti-Slip
Decking Oil, Clear*

*Clear wood finishes do not protect against UV radiation from the sun (greying).



RE-FINISH
WITHOUT
SANDING

Saves time and money

TOP PRICE
PER M²



ESPECIALLY FOR WINDOWS AND
DOORS: WHITE OPAQUE GLOSS
WOOD STAIN 2104* FROM OSMO

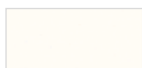
COUNTRY COLOUR

Colourful diversity and unrivalled durability – for all weather conditions!

- > Opaque, satin, for exterior use
- > Highly recommended for timber cladding, balconies, windows, summer houses, garden sheds and furniture etc.
- > Osmo Country Colour is weatherproof and robust against small damages.
- > Number of coats: two coats on raw wood. For renovation, normally one coat applied to a clean and dry surface is sufficient – without sanding!
- > Can sizes: 0.75 L; 2.50 L; 25 L
- > 1 litre covers approx. 26 m² with one coat.



Apply with:



2101 White



2203 Light Ochre



2204 Ivory



2205 Sunflower Yellow



2308 Nordic Red



2310 Cedar/
Redwood



2311 Signal Red



2404 Fir Green



2501 Labrador Blue



2506 Royal Blue



2507 Dove Blue



2606 Medium Brown



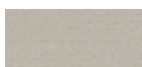
2607 Dark Brown



2703 Charcoal



2704 Dusk Grey



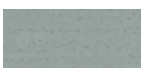
2708 Pebble Grey



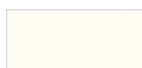
2716 Anthracite Grey



2735 Light Grey



2742 Traffic Grey



2104 White
(Opaque Gloss
Wood Stain)

*2nd coat=opaque



BEAUTIFULLY GREYED WOOD FROM
THE VERY BEGINNING WITH NATURAL
OIL WOODSTAIN 905, 906, 907*.

NATURAL OIL WOODSTAIN

Base and top coat combined into one – innovative, long-term, oil based protection!

- > Transparent, satin, for exterior use
- > Highly recommended for timber cladding, carports, balconies, privacy screens, fencing etc.
- > Natural Oil Woodstain is water-repellent, weatherproof and UV-stable. The microporous surface contains active ingredients to protect the coating against mould, algae and fungal attack.
- > Number of coats: two coats on raw wood. For renovation, normally one coat applied to a clean and dry surface is sufficient – without sanding!
- > Can sizes: 0.75 L; 2.50 L; 25 L
- > 1 litre covers approx. 26 m² with one coat



Apply with:



700 Pine
on Spruce



702 Larch
on Spruce



703 Mahogany
on Spruce



706 Oak
on Spruce



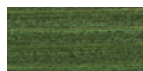
707 Walnut
on Spruce



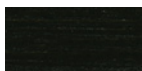
708 Teak
on Spruce



728 Red Cedar
on Spruce



729 Fir Green
on Spruce



712 Ebony
on Spruce



727 Rosewood
on Spruce



731 Oregon Pine
on Spruce



732 Light Oak
on Spruce



710 Stone Pine
on Spruce



900 White
on Spruce

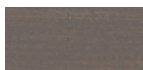


903 Basalt Grey
on Spruce



701 Clear, matt*
No UV protection

GREYING
FINISHES:



905 Patina
on Spruce



906 Pearl Grey
on Spruce



907 Quartz Grey
on Spruce

*Matt top coat for vertical wood surfaces in outdoor areas.



FURTHER GREYING FINISHES
CAN BE FOUND ON PAGE 13.

NATURAL OIL WOODSTAIN EFFECT

Meets the demands of modern architecture – the innovative long-term protection in three attractive silver-metallic tones!

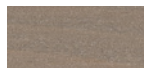
- > Transparent, satin, for exterior use
- > Highly recommended for timber cladding, carports, balconies, privacy screens and fencing etc.
- > Natural Oil Woodstain Effect is water-repellent, extremely weatherproof and UV-stable. The microporous and breathable surface also contains active ingredients to protect the coating against mould, algae and fungal attack.
- > Number of coats: two coats on raw wood. For renovation, generally one coat applied to a clean and dry surface is sufficient – without sanding!
- > Can sizes: 0.75 L; 2.50 L; 25 L
- > 1 litre covers approx. 26 m² with one coat.



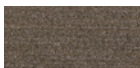
Apply with:



1140 Agate-Silver
on Spruce



1142 Graphite-Silver
on Spruce



1143 Onyx-Silver
on Spruce



Safe for humans,
animals and plants
(when dry)

Suitable for
children's toys

According to DIN EN 71.3: fast to perspiration and saliva

COVERS MORE, FASTER AND WITH
LESS PRODUCT!

ONE COAT ONLY HS^{PLUS}

Twice as much coverage thanks to high oil content – this saves time and money!

- > Transparent, satin, for exterior use
- > Highly recommended for timber cladding, balconies, roof soffits, summer houses, privacy screens, fencing etc.
- > Osmo One Coat Only HS Plus smoothens the wood surface and does not crack, flake, peel or blister. The finish is durable, weatherproof, UV-stable, water-repellent. It regulates moisture and reduces swelling and shrinkage.
- > Number of coats: one coat is enough!
- > Can sizes: 0.375 L; 0.75 L; 2.50 L; 25 L
- > 1 litre covers approx. 26 m² with one coat.



Apply with:



9211 White Spruce*
on Spruce



9212 Silver Poplar
on Spruce



9221 Pine
on Spruce



9232 Mahogany
on Spruce



9234 Scand. Red
on Spruce



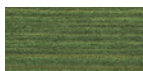
9235 Red Cedar
on Spruce



9236 Larch
on Spruce



9241 Oak
on Spruce



9242 Fir Green
on Spruce



9261 Walnut
on Spruce



9262 Teak
on Spruce



9264 Rosewood
on Spruce



9271 Ebony
on Spruce

*limited UV protection

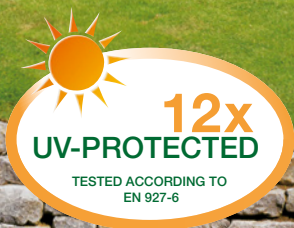


photo: Schwörer-Haus KG

UV-PROTECTION-OIL **EXTRA**:
PROTECTED AGAINST MOULD,
ALGAE AND FUNGAL ATTACK.

UV-PROTECTION-OIL & UV-PROTECTION-OIL EXTRA

Optimal protection against the sun – the first clear oil-based UV protection for the outdoors!

- > Clear, satin, for exterior use
- > Highly recommended for all vertical wood surfaces in outdoor areas: timber cladding, roof soffits, balcony cladding, windows and doors etc.
- > As a top coat on colour treated wood, UV-Protection-Oil prolongs the renovation intervals significantly. As a single product application, it blocks the greying process with a UV protection factor 12 in comparison to untreated wood.
- > UV-Protection-Oil Extra contains active ingredients for the preventive protection of the coating against mould, algae and fungal attack.
- > Number of coats: two coats on untreated wood, for renovation one coat applied to a clean and dry surface suffices – without sanding!
- > Can sizes: 0.75 L; 2.50 L; 25 L
- > 1 litre covers approx. 18 m² with one coat.



Apply with:



410 Clear, satin
without film protection



420 Clear, satin
with film protection



Untreated or conventionally oil-treated wood without UV protection.



Wood treated with UV-Protection Oil.



OPTIMAL WOOD PROTECTION IN
VARIOUS WOOD TONES:
UV-PROTECTION-OIL TINTS

UV-PROTECTION-OIL TINTS

Protected perfectly against the sun - transparent, lightly pigmented UV protection for outdoor areas!

- > Transparent, lightly pigmented, satin, for exterior use
- > Highly recommended for all vertical wood surfaces in outdoor areas: timber cladding, roof soffits, balcony cladding, windows and doors etc.
- > As a top coat on colour treated wood, UV-Protection-Oil Tints prolongs the renovation intervals significantly. As a single product application, it blocks the greying process with a UV protection factor 12 in comparison to untreated wood.
- > The finish contains active ingredients for the preventive protection of the coating against mould, algae and fungal attack.
- > Number of coats: two coats on untreated wood, for renovation one coat applied to a clean and dry surface suffices – without sanding!
- > Can sizes: 0.75 L; 2.50 L; 25 L
- > 1 litre covers approx. 18 m² with one coat.



Apply with:



424 Spruce, satin,
with film protection



425 Oak, satin, with
film protection



426 Larch, satin,
with film protection



427 Douglas Fir,
satin, with film
protection



428 Red Cedar,
satin, with film
protection



429 Natural, satin,
with film protection



WR BASE COAT*

The special protective wood impregnation against insect and fungal attack!

- > Clear, for exterior use
- > Highly recommended for wood without structural loads or contact to the ground, such as windows, shutters, doors, pergolas, cladding and garden furniture
- > Osmo WR Base Coat is extremely water-repellent, reduces swelling and shrinkage, guards against wood pests, such as blue stain, rot and insect attack. Ideal is as a base coat for all oil based finishes; all Osmo wood finishes are suitable as the required top coat!
- > Number of coats: one coat is sufficient, a top coat is absolutely required.
- > Can sizes: 0.75 L; 2.50 L; 25 L
- > Application quantity: 160-200 ml/m²



Apply with:



* Use biocides safely. Always read the label and product information before use.



GARDEN FURNITURE MAINTENANCE KIT

A new fresh look for fine garden furniture - suitable for Teak and many other hardwoods!

- > Set for the maintenance of wood in outdoor areas
- > Highly recommended for garden and decking furniture
Set contents: Wood Reviver Power-Gel – refreshes and cleans greyed wood, Teak-Oil Spray – protects, maintains and improves the appearance of garden furniture and decking (water and dirt-repellent oil), Buffing fleece and a hard bristle brush



TEAK-OIL SPRAY

- > Clear, water and dirt-repellent oil
- > Enhances the natural wood structure
- > Penetrates deeply into the wood, regulates moisture and reduces swelling and shrinking.
- > 1 litre covers approx. 5-10 m² with one coat.





DECKING CLEANER

- > Highly effective concentrate for exterior use
- > Removes dirt and stains effectively
- > Sizes: 1 L; 5 L
- > 1 litre cleans approx. 30-100 m², depending on the degree of contamination.



GARD CLEAN*

- > Highly effective concentrate for exterior use
- > Removes green growth effectively
- > Sizes: 1 L; 5 L
- > 1 litre cleans approx. 30-100 m², depending on degree of green growth.



WOOD REVIVER **POWER-GEL**

- > Thick special cleaning paste for exterior use
- > Degreys wood reliably
- > Sizes: 0.5 L; 2.5 L with scrub brush
- > 1 litre refreshes approx. 10 m², depending on level of greying



*Use biocides safely. Always read the label and product information before use.



POLYMER COMPOSITE CLEANER*

- > Highly effective concentrate for exterior use
- > Cleans polymere composites reliably
- > Sizes: 1 L; 5 L
- > 1 litre cleans approx. 10-50 m², depending on the degree of contamination



Apply to the complete area! Trial application is absolutely necessary!

PAINT REMOVER GEL

- > Paste-like Paint Remover Gel, for the exterior
- > Removes old oil based finishes and wood stains
- > Sizes: 500 ml, 2.5 L with Decking Cleaning Brush, 5 L and 10 L
- > 1 litre covers with one coat approx. 5 m², depending on existing surface conditions.



PROCESSING TIP

For cleaning timber or polymer composite decking optimally, Osmo offers the Decking and Flooring Cleaning Machine. If interested, contact your local dealer.





TOOLS FOR OPTIMAL RESULTS



RESIN REMOVER SET

Removes resin spots quickly and easily.



BRUSH CLEANER AND THINNER

For cleaning work tools after applying Osmo wood finishes, oil or resin-based finishes. Cleans brushes quickly and easily!



FLAT BRUSH

Available in the widths: 25, 50, 60 and 100 mm. Suitable for the application of all oil-based finishes from Osmo.



ROLLER AND BRUSH SET

For the manual application of all Osmo finishes. Contains roller tray with ridged area, disposable tray inserts (3 pieces), Microfibre Roller (100 mm wide), roller frame with connector for Osmo System Telescopic Handle, Flat Brush (60 mm).



DECKING BRUSH SET

Ideal for the manual application of Decking-Oils. Contains roller tray with ridged area, disposable tray inserts (3 pieces), Decking Brush with handle (150 mm wide) and connector for Osmo System Telescopic Handle, Flat Brush (25 mm).



DECKING BRUSH WITH HANDLE

Thanks to the ergonomic handle and connector for the Osmo System Telescopic Handle, it is suitable for manual applications with Decking-Oils. Available width: 150 mm



SYSTEM TELESCOPIC HANDLE

High quality aluminium Telescopic Handle with Soft-Touch grip and Quick Connect technology. Adjustable length: 120-200 cm.



DECKING CLEANING BRUSH WITH HANDLE

Thanks to the ergonomic handle and connector for the Osmo System Telescopic Handle, it is suitable for manual cleaning of smooth and profiled decking. Available width: 150 mm



COATING TECHNICALLY MODIFIED TIMBER

As alternative to tropical hardwoods, even more and more so-called technically modified wood species are entering the market. Through this modification, not only the natural wood properties are changed but also changes in the coating properties.

In the following, we present the most important types of technically modified timber and explain the possibilities for coating these with Osmo wood finishes.

PRESSURE IMPREGNATED PINE (GREEN / GREY)

Due to impregnation salts, finish absorption directly after the processing is restricted. By weathering off for approx. six months, excess salt is washed out and the wood can then absorb the protective finish. Additional coating with impregnation is not necessary. After weathering off, we recommend degreying wood with our Wood Reviver Power-Gel and then apply the coating. On pressure impregnated Pine, all exterior Osmo finishes can be used.

THERMALLY MODIFIED TIMBER

Thermally modified timber (TMT) is prone to grey very fast. For this reason, we recommend coating the timber within the first two weeks after processing. An additional impregnation coating is not absolutely necessary. On thermally modified timber, all exterior Osmo finishes can be used. Due to its good absorption qualities for oils, more finish may be needed.

ACCOYA® TIMBER

Through the acetylation of the timber, it is generally more durable, dimensionally more stable and lasts longer. An additional impregnation coating is necessary if lightly coloured wood stains are to be used, as acetylated timber (usually acetylated *Pinus radiata*) is more susceptible to blue stain. Afterwards acetylated timber can be coated with any exterior Osmo finish without any problems.

KEBONY® TIMBER

Through the impregnation with Furfuryl alcohol, the wood cells are crosslinked and thus moisture absorption is greatly reduced. An additional impregnation coating is, however, still recommendable, since the impregnated timber is susceptible to black mould. Kebony® timber can be coated with any exterior Osmo finish directly after the processing.

DAUERHOLZ TIMBER

Through the impregnation with paraffin wax, there is a risk that the wax is released again when the timber is under extreme weather conditions (heat). Even when priming, obtaining good penetration and an optimal bond between our finishes and the wood is difficult due to the wax. Therefore we cannot recommend coating Dauerholz timber with an exterior Osmo finish.

WOOD SPECIES RICH IN EXTRACTIVES

Please note that weathering off the surface increases the finish absorption of the timber fundamentally. Therefore it is also recommended for technically unmodified timber, especially wood species rich in extractives (also European Oak), to wait for the appropriate time to coat the timber. Further details can be found in the respective production information sheet.





COUNTRY COLOUR AND NATURAL OIL WOODSTAIN IN MIXED COLOUR TONES

186 RAL and 1950 NCS colour tones

A can of wood finish in the colour of your choice: our microporous, oil-based Country Colours and Natural Oil Wood Stains are available in nearly all RAL or NCS colour tones. Osmo Country Colour is also available upon request with active ingredients against mould and fungal attack.

Colour tones are mixed in our colour lab and are ready for shipping generally within 5-7 work days after receipt of order. Stains allow the subsurface to shine through. The appearance of the RAL/NCS colours may vary depending on the wood species used.

The minimum order amount per colour tone is 2.5 litres. Mixed colour tones are approximate colour tones. Effect, fluorescent and metallic colour tones are not available.

Stains allow the subsurface to shine through. Depending on the wood species, the appearance of the colour tone may differ optically from the RAL /NCS colour code book.

Original RAL 8028

opaque

transparent

ONE SYSTEM, ALL ADVANTAGES COMBINED



OIL AND WAX-BASED FINISHING SYSTEM

- > Protects the wood from the inside
- > Does not form a film
- > Forms a protective, microporous surface

ADVANTAGES

- > The finish penetrates deeply into wood and protects the surface
- > Enhances the natural wood colour
- > Spot repairs can be carried out easily
- > Does not crack, flake or peel
- > Great liquid resistance
- > Easy to maintain

OTHER SYSTEMS IN COMPARISON



TRADITIONAL OIL-BASED FINISHING SYSTEM

- > Protects the wood from the inside
- > Does not form a film
- > Does not form a protective surface

ADVANTAGES OF AN OIL-BASED FINISH

- > The oil penetrates deeply into wood and networks with it
- > Enhances the natural wood colour
- > Spot repairs can be carried out easily
- > Does not crack, flake, or peel

DISADVANTAGES OF AN OIL-BASED FINISH

- > Insufficient liquid resistance
- > Time-consuming maintenance



LACQUER AND WATER-BASED FINISHING SYSTEM

- > Protects the wood from the outside
- > Forms a film
- > Forms a thick layer

ADVANTAGES OF A WATER-BASED FINISH

- > Good liquid resistance
- > Protects against wear
- > Easy maintenance

DISADVANTAGES OF A WATER-BASED FINISH

- > Renovation is only possible after sanding
- > Spot repairs are not possible
- > The finish cracks, flakes and peels

**Osmo Holz und Color
GmbH & Co. KG**

Affhüppen Esch 12
D-48231 Warendorf

Telephone +49 (0)2581/922-100
Telefax +49 (0)2581/922-200

PO Box 110161
D-48203 Warendorf

www.osmo.de/en
info@osmo.de

Please contact us for further information:

